



**TC1303B Dual-Output
Regulator with Power-Good Output
User's Guide**

Note the following details of the code protection feature on Microchip devices:

- Microchip products meet the specification contained in their particular Microchip Data Sheet.
- Microchip believes that its family of products is one of the most secure families of its kind on the market today, when used in the intended manner and under normal conditions.
- There are dishonest and possibly illegal methods used to breach the code protection feature. All of these methods, to our knowledge, require using the Microchip products in a manner outside the operating specifications contained in Microchip's Data Sheets. Most likely, the person doing so is engaged in theft of intellectual property.
- Microchip is willing to work with the customer who is concerned about the integrity of their code.
- Neither Microchip nor any other semiconductor manufacturer can guarantee the security of their code. Code protection does not mean that we are guaranteeing the product as "unbreakable."

Code protection is constantly evolving. We at Microchip are committed to continuously improving the code protection features of our products. Attempts to break Microchip's code protection feature may be a violation of the Digital Millennium Copyright Act. If such acts allow unauthorized access to your software or other copyrighted work, you may have a right to sue for relief under that Act.

Information contained in this publication regarding device applications and the like is provided only for your convenience and may be superseded by updates. It is your responsibility to ensure that your application meets with your specifications. MICROCHIP MAKES NO REPRESENTATIONS OR WARRANTIES OF ANY KIND WHETHER EXPRESS OR IMPLIED, WRITTEN OR ORAL, STATUTORY OR OTHERWISE, RELATED TO THE INFORMATION, INCLUDING BUT NOT LIMITED TO ITS CONDITION, QUALITY, PERFORMANCE, MERCHANTABILITY OR FITNESS FOR PURPOSE. Microchip disclaims all liability arising from this information and its use. Use of Microchip's products as critical components in life support systems is not authorized except with express written approval by Microchip. No licenses are conveyed, implicitly or otherwise, under any Microchip intellectual property rights.

Trademarks

The Microchip name and logo, the Microchip logo, Accuron, dsPIC, KEELOQ, microID, MPLAB, PIC, PICmicro, PICSTART, PRO MATE, PowerSmart, rfPIC, and SmartShunt are registered trademarks of Microchip Technology Incorporated in the U.S.A. and other countries.

AmpLab, FilterLab, Migratable Memory, MXDEV, MXLAB, PICMASTER, SEEVAL, SmartSensor and The Embedded Control Solutions Company are registered trademarks of Microchip Technology Incorporated in the U.S.A.

Analog-for-the-Digital Age, Application Maestro, dsPICDEM, dsPICDEM.net, dsPICworks, ECAN, ECONOMONITOR, FanSense, FlexROM, fuzzyLAB, In-Circuit Serial Programming, ICSP, ICEPIC, Linear Active Thermistor, MPASM, MPLIB, MPLINK, MPSIM, PICKit, PICDEM, PICDEM.net, PICLAB, PICTail, PowerCal, PowerInfo, PowerMate, PowerTool, rLAB, rfPICDEM, Select Mode, Smart Serial, SmartTel, Total Endurance and WiperLock are trademarks of Microchip Technology Incorporated in the U.S.A. and other countries.

SQTP is a service mark of Microchip Technology Incorporated in the U.S.A.

All other trademarks mentioned herein are property of their respective companies.

© 2005, Microchip Technology Incorporated, Printed in the U.S.A., All Rights Reserved.

 Printed on recycled paper.

**QUALITY MANAGEMENT SYSTEM
CERTIFIED BY DNV
== ISO/TS 16949:2002 ==**

Microchip received ISO/TS-16949:2002 quality system certification for its worldwide headquarters, design and wafer fabrication facilities in Chandler and Tempe, Arizona and Mountain View, California in October 2003. The Company's quality system processes and procedures are for its PICmicro® 8-bit MCUs, KEELOQ® code hopping devices, Serial EEPROMs, microperipherals, nonvolatile memory and analog products. In addition, Microchip's quality system for the design and manufacture of development systems is ISO 9001:2000 certified.



TC1303B DUAL-OUTPUT REGULATOR USER'S GUIDE

Table of Contents

Preface	1
Chapter 1. Product Overview	
1.1 Introduction	5
1.2 What is the TC1303B Dual-Output Regulator with Power-Good Output Demo Board?	6
1.3 What the TC1303B Dual-Output Regulator with Power-Good Output Demo Board kit includes	6
Chapter 2. Installation and Operation	
2.4 Introduction	7
2.5 Features	7
2.6 Getting Started	7
Appendix A. Schematic and Layouts	9
A.1 Introduction	9
A.2 Board Schematic	10
A.3 Board – Assembly Drawing	11
A.4 Board – Top Overlay	12
A.5 Board – Top Layer	13
A.6 Board – Bottom Layer	14
Appendix B. Bill-Of-Materials (BOM)	15
Worldwide Sales and Service	16

TC1303B Dual-Output Regulator User's Guide

NOTES:



TC1303B DUAL-OUTPUT REGULATOR USER'S GUIDE

Preface

NOTICE TO CUSTOMERS

All documentation becomes dated, and this manual is no exception. Microchip tools and documentation are constantly evolving to meet customer needs, so some actual dialogs and/or tool descriptions may differ from those in this document. Please refer to our web site (www.microchip.com) to obtain the latest documentation available.

Documents are identified with a "DS" number. This number is located on the bottom of each page, in front of the page number. The numbering convention for the DS number is "DSXXXXA", where "XXXX" is the document number and "A" is the revision level of the document.

INTRODUCTION

This chapter contains general information that will be useful to know before using the TC1303B Dual-Output Regulator with Power-Good Output Demo Board. Items discussed in this chapter include:

- Document Layout
- Conventions Used in this Guide
- Recommended Reading
- The Microchip Web Site
- Customer Support
- IDocument Revision History

DOCUMENT LAYOUT

This document describes how to use the TC1303B Dual-Output Regulator with Power-Good Output Demo Board. The manual layout is as follows:

- **Chapter 1. "Product Overview"** – Important information about the TC1303B Dual-Output Regulator with Power-Good Output Demo Board.
- **Chapter 2. "Installation and Operation"** – Provides a description of the demo board and includes instructions on how to get started.
- **Appendix A. "Schematic and Layouts"** – Shows the schematic and layout diagrams for the TC1303B Dual-Output Regulator with Power-Good Output Demo Board.
- **Appendix B. "Bill-Of-Materials (BOM)"** – Lists the parts used to build the TC1303B Dual-Output Regulator with Power-Good Output Demo Board.

TC1303B Dual-Output Regulator User's Guide

CONVENTIONS USED IN THIS GUIDE

This manual uses the following documentation conventions:

DOCUMENTATION CONVENTIONS

Description	Represents	Examples
Arial font:		
Italic characters	Referenced books	<i>MPLAB[®] IDE User's Guide</i>
	Emphasized text	...is the <i>only</i> compiler...
Initial caps	A window	the Output window
	A dialog	the Settings dialog
	A menu selection	select Enable Programmer
Quotes	A field name in a window or dialog	"Save project before build"
Underlined, italic text with right angle bracket	A menu path	<u><i>File</i></u> >Save
Bold characters	A dialog button	Click OK
	A tab	Click the Power tab
Text in angle brackets < >	A key on the keyboard	Press <Enter>, <F1>
Courier font:		
Plain Courier	Sample source code	#define START
	Filenames	autoexec.bat
	File paths	c:\mcc18\h
	Keywords	_asm, _endasm, static
	Command-line options	-Opa+, -Opa-
	Bit values	0, 1
	Constants	0xFF, 'A'
Italic Courier	A variable argument	<i>file.o</i> , where <i>file</i> can be any valid filename
Square brackets []	Optional arguments	mcc18 [options] <i>file</i> [options]
Curly brackets and pipe character: { }	Choice of mutually exclusive arguments; an OR selection	errorlevel {0 1}
Ellipses...	Replaces repeated text	var_name [, var_name...]
	Represents code supplied by user	void main (void) { ... }

RECOMMENDED READING

This user's guide describes how to use the TC1303B Dual-Output Regulator with Power-Good Output Demo Board. The following Microchip document is available and recommended as a supplemental reference resources.

TC1303B Data Sheet, "500 mA Synchronous Buck Regulator + 300 mA LDO with Power-Good Output", (DS21949)

This data sheet provides detailed information regarding the TC1303B product family.

THE MICROCHIP WEB SITE

Microchip provides online support via our web site at www.microchip.com. This web site is used as a means to make files and information easily available to customers. Accessible by using your favorite Internet browser, the web site contains the following information:

- **Product Support** – Data sheets and errata, application notes and sample programs, design resources, user's guides and hardware support documents, latest software releases and archived software
- **General Technical Support** – Frequently Asked Questions (FAQs), technical support requests, online discussion groups, Microchip consultant program member listing
- **Business of Microchip** – Product selector and ordering guides, latest Microchip press releases, listing of seminars and events, listings of Microchip sales offices, distributors and factory representatives

CUSTOMER SUPPORT

Users of Microchip products can receive assistance through several channels:

- Distributor or Representative
- Local Sales Office
- Field Application Engineer (FAE)
- Technical Support
- Development Systems Information Line

Customers should contact their distributor, representative or Field Application Engineer (FAE) for support. Local sales offices are also available to help customers. A listing of sales offices and locations is included in the back of this document.

Technical support is available through the web site at: <http://support.microchip.com>

IDOCUMENT REVISION HISTORY

Revision A (June 2005)

- Initial Release of this Document.

TC1303B Dual-Output Regulator User's Guide

NOTES:

Chapter 1. Product Overview

1.1 INTRODUCTION

The TC1303B Dual-Output Regulator with Power-Good Output Demo Board is used to demonstrate the operation of the TC1303B. The TC1303B combines a 500 mA synchronous buck regulator and 300 mA Low-Dropout Regulator (LDO) with a power-good monitor to provide a highly integrated solution for devices that require multiple supply voltages. The unique combination of an integrated buck switching regulator and low-dropout linear regulator provides the smallest, lowest system cost for dual-output voltage applications, with one low processor core voltage and one higher bias voltage.

The 500 mA synchronous buck regulator switches at a fixed frequency of 2.0 MHz when the load is heavy, providing a low noise, small solution. When the load on the buck output is reduced to light levels, it changes operation to a pulse frequency modulation mode to minimize quiescent current draw from the battery. No intervention is necessary for smooth transition from one mode to another.

The LDO provides a 300 mA auxiliary output that requires a single 1 μ F ceramic output capacitor, minimizing board area and cost. Typical dropout voltage for the LDO output is 137 mV for a 200 mA load.

For the TC1303B, the power-good output logic level is based on the regulation of the LDO output only. The buck regulator can be turned on and off without affecting the power-good signal.

This chapter covers the following topics:

- What is the TC1303B Dual-Output Regulator with Power-Good Output Demo Board?
- What the TC1303B Dual-Output Regulator with Power-Good Output Demo Board kit includes

1.2 WHAT IS THE TC1303B DUAL-OUTPUT REGULATOR WITH POWER-GOOD OUTPUT DEMO BOARD?

The TC1303B Dual-Output Regulator with Power-Good Output Demo Board can be used to evaluate the TC1303B device over the input voltage range and output current range for both the synchronous buck regulator output and the low-dropout linear regulator output.

Test points are provided for input power, output loads, shutdown control and power-good monitoring.

1.3 WHAT THE TC1303B DUAL-OUTPUT REGULATOR WITH POWER-GOOD OUTPUT DEMO BOARD KIT INCLUDES

This TC1303B Dual-Output Regulator with Power-Good Output Demo Board kit includes:

- The TC1303B Dual-Output Regulator with Power-Good Output Demo Board Board (102-00055)
- TC1303B 500 mA Buck Regulator, 300 mA LDO with Power-Good Output Demo Board User's Guide (DS51563)
- TC1303B Data Sheet, "*500 mA Synchronous Buck Regulator, + 300 mA LDO with Power-Good Output*", (DS21949)

Chapter 2. Installation and Operation

2.1 INTRODUCTION

The TC1303B Dual-Output Regulator with Power-Good Output Demo Board demonstrates Microchip's TC1303B Dual Output Voltage Regulator over its entire range of operation.

2.2 FEATURES

The TC1303B Dual-Output Regulator with Power-Good Output Demo Board has the following features:

- Test points for applying input voltage (0V to 5.5V)
- Test points for connecting external loads
 - Buck V_{OUT1} = 0 mA to 500 mA
 - LDO V_{OUT2} = 0 mA to 300 mA
 - PG Output
 - Shutdown V_{OUT1} and shutdown V_{OUT2}
- The fixed output voltages for the TC1303B can be determined by using the data sheet section titled "**Product Identification System**". Refer to the TC1303B data sheet (DS21949) for details.

2.3 GETTING STARTED

The TC1303B Dual-Output Regulator with Power-Good Output Demo Board is fully assembled and tested for evaluating the TC1303B device operation.

2.3.1 Power Input and Output Connections

2.3.1.1 POWERING THE TC1303B DUAL-OUTPUT REGULATOR WITH POWER-GOOD OUTPUT DEMO BOARD

For normal operation, it is not necessary to pull up the shutdown pins of the TC1303B device, pull-up resistors are placed on the board.

1. Apply the input voltage (+2.7V to +5.5V for normal operation) to board test point TP2 ($+V_{IN}$) and TP4 (P_{GND}).
2. Connect buck regulator load (0 mA to 500 mA for normal operation) to board test point TP3 ($+V_{O1}$) and TP7 (P_{GND}).
3. Connect LDO regulator load (0 mA to 300 mA for normal operation) to TP10 ($+V_{O2}$) and TP11 (A_{GND}).
4. The power-good output signal is available on test point TP5 (PG).
5. To shutdown V_{OUT1} , a jumper wire from TP8, ($\overline{SHDN1}$) to the A_{GND} test point (TP11) can be used. This will disable the buck regulator output voltage (the LDO output voltage is not affected).
6. To shutdown V_{OUT2} , a jumper wire from TP9 ($\overline{SHDN2}$) to the A_{GND} test point (TP11) can be used. This will disable the LDO output voltage (the buck regulator output voltage is not affected).

Note: When grounding the shutdown pins, the input voltage is placed across the 1 M Ω pull-up resistor. This will cause the input current to increase by a few micro-amps.



TC1303B DUAL-OUTPUT REGULATOR USER'S GUIDE

Appendix A. Schematic and Layouts

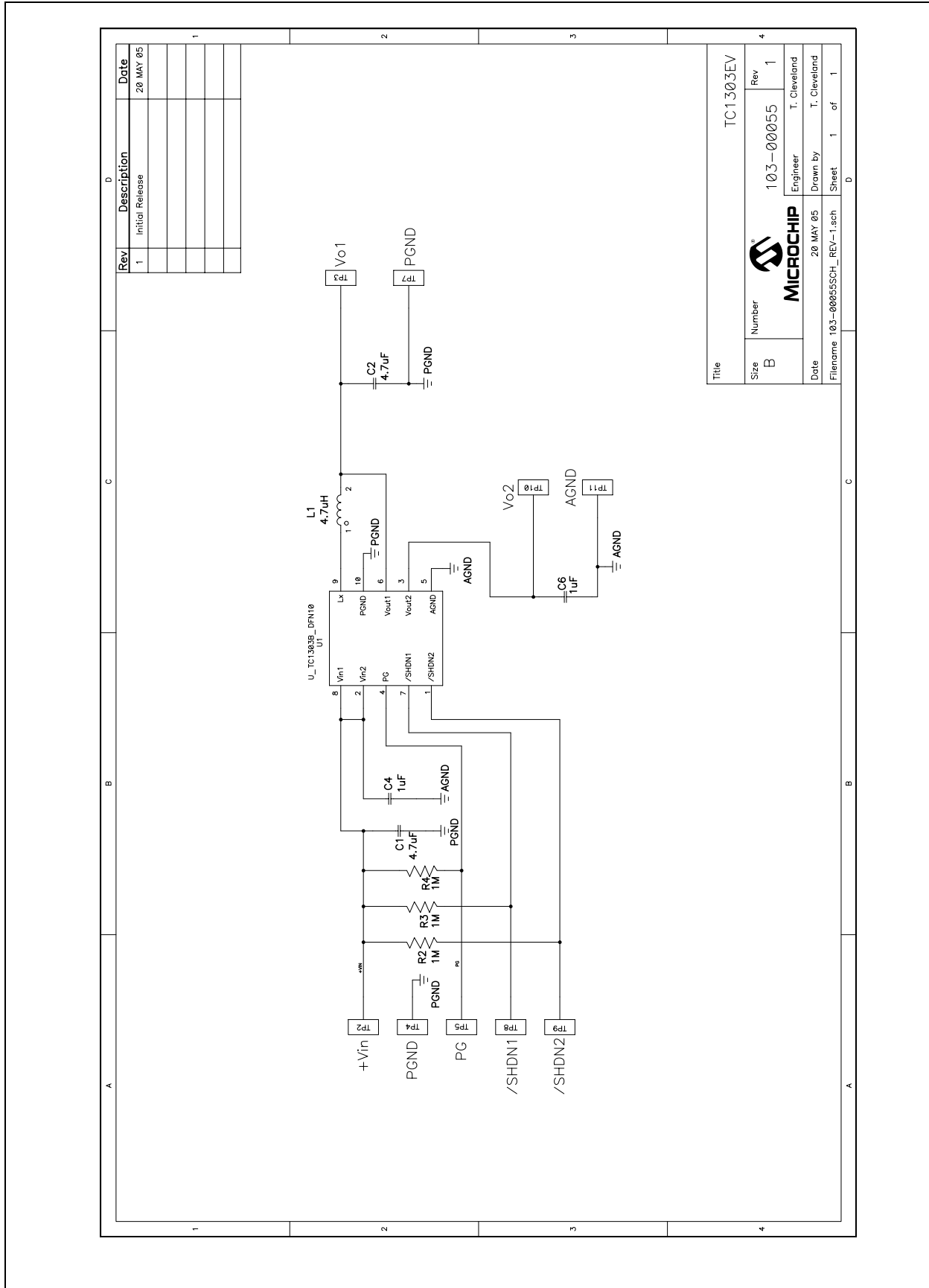
A.1 INTRODUCTION

This appendix contains the following schematic and layout diagrams for the TC1303B Dual-Output Regulator with Power-Good Output Demo Board:

- Board Schematic
- Board – Assembly Drawing
- Board – Top Overlay
- Board – Top Layer
- Board – Bottom Layer

TC1303B Dual-Output Regulator User's Guide

A.2 BOARD SCHEMATIC



Rev	Description	Date
1	Initial Release	20 MAY 05

Title		TC1303EV	
Size	Number	Rev	
B	103-00055	1	
MICROCHIP		Engineer	T. Cleveland
Date	20 MAY 05	Drawn by	T. Cleveland
Filename	103-00055SCH_REV-1.sch	Sheet	1 of 1

A.3 BOARD – ASSEMBLY DRAWING

REV	DESCRIPTION	DATE
1	Initial Design	20MAY05

NOTES:

MATERIAL:
FR-4, THICKNESS COPPER

TWO LAYER BOARD

FINISH:

- SOLDERMASK OVER BARE COPPER(SMOBC) WITH HOT-AIR-LEVELLED SOLDER
- SMOBC WITH SELECTIVE GOLD PLATING ON LANDS INDICATED, 10µl GOLD OVER 50-100µl NICKEL.
- 60/40 TIN-LEAD REFLOW

SOLDERMASK – DYNACHEM EPIC 200 LPI OR EQUIVALENT.
COLOR—Green High Gloss
SILKSCREEN – White

USE ARTWORK SET NO. REV

ANY ALTERNATIVES TO THE ABOVE SPECIFICATIONS MUST BE APPROVED BY THE ENGINEERING DEPARTMENT AT MICROCHIP.

THIS PCB TO BE MANUFACTURED TO MEET ALL ACCEPTANCE LEVELS OF A CLASS 2 PCB PER ANSI/IPC-A-600F.

Hole Dia. (Inch)	Symbol	Quantity	Plated
0.018	+	14	Yes
0.140	X	4	Yes

ASSEMBLY NOTES:

1. ALL UNUSED COMPONENTS SHALL BE FREE OF SOLDER
2. ALL COMPONENTS SHALL BE MOUNTED FLUSH TO THE BOARD, EXCEPT AS NOTED.
3. MAXIMUM COMPONENT HEIGHT NOT TO EXCEED: 0.500 TOP SIDE, 0.048 BOTTOM SIDE
4. FINISHED BOARD SHALL BE FREE OF ALL RESIDUES.
5. THESE COMPONENTS REQUIRE SOCKETS :
6. ALL LEADS SHALL BE TRIMED TO A MAXIMUM LEIGHT OF 0.045

162-00055
CIPHER METER
OUTPUT BOARD
PCB

105-00055
REV **1**

TC1303EV

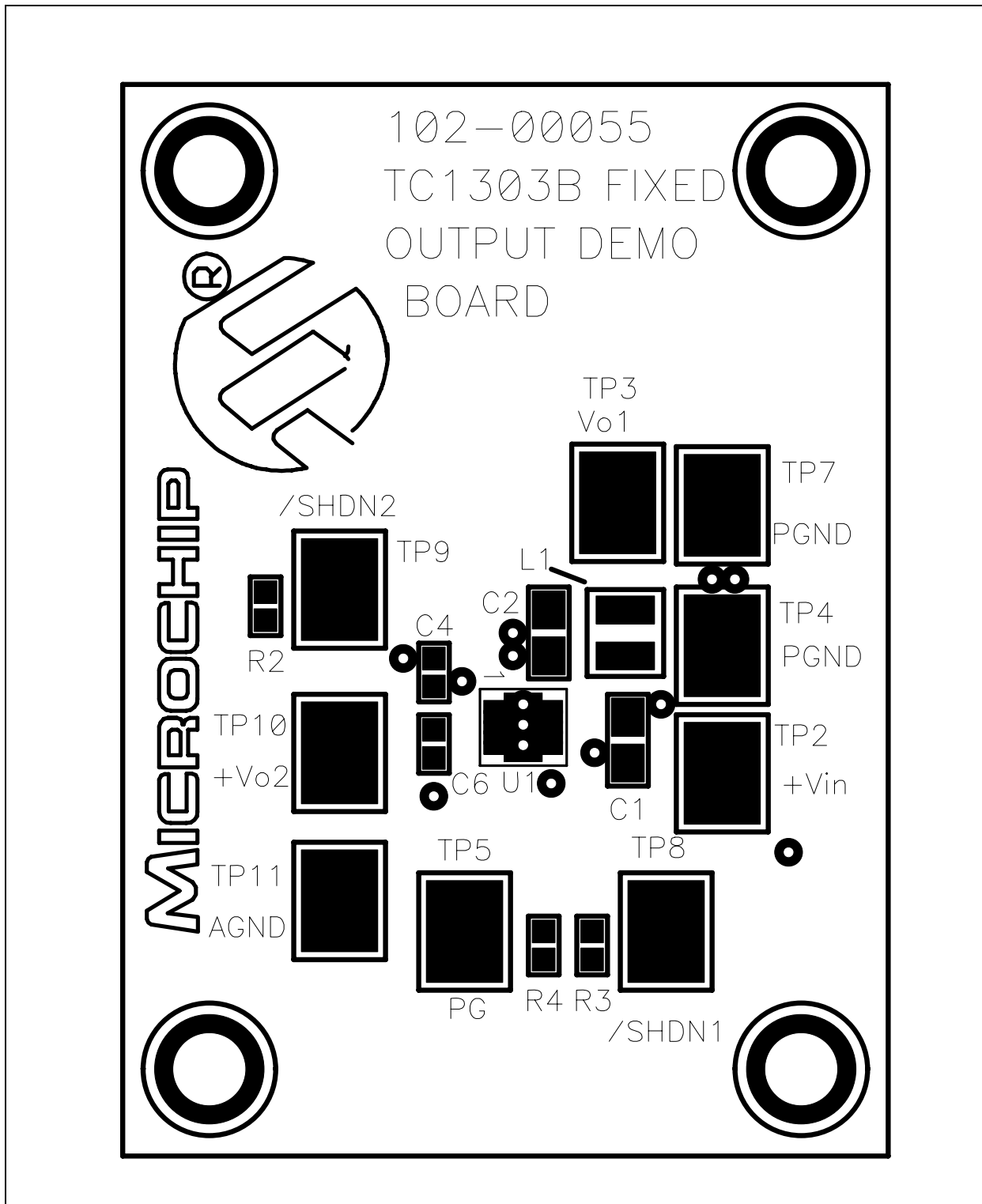
Size	Number	Rev
B	104-00055	1

MICROCHIP

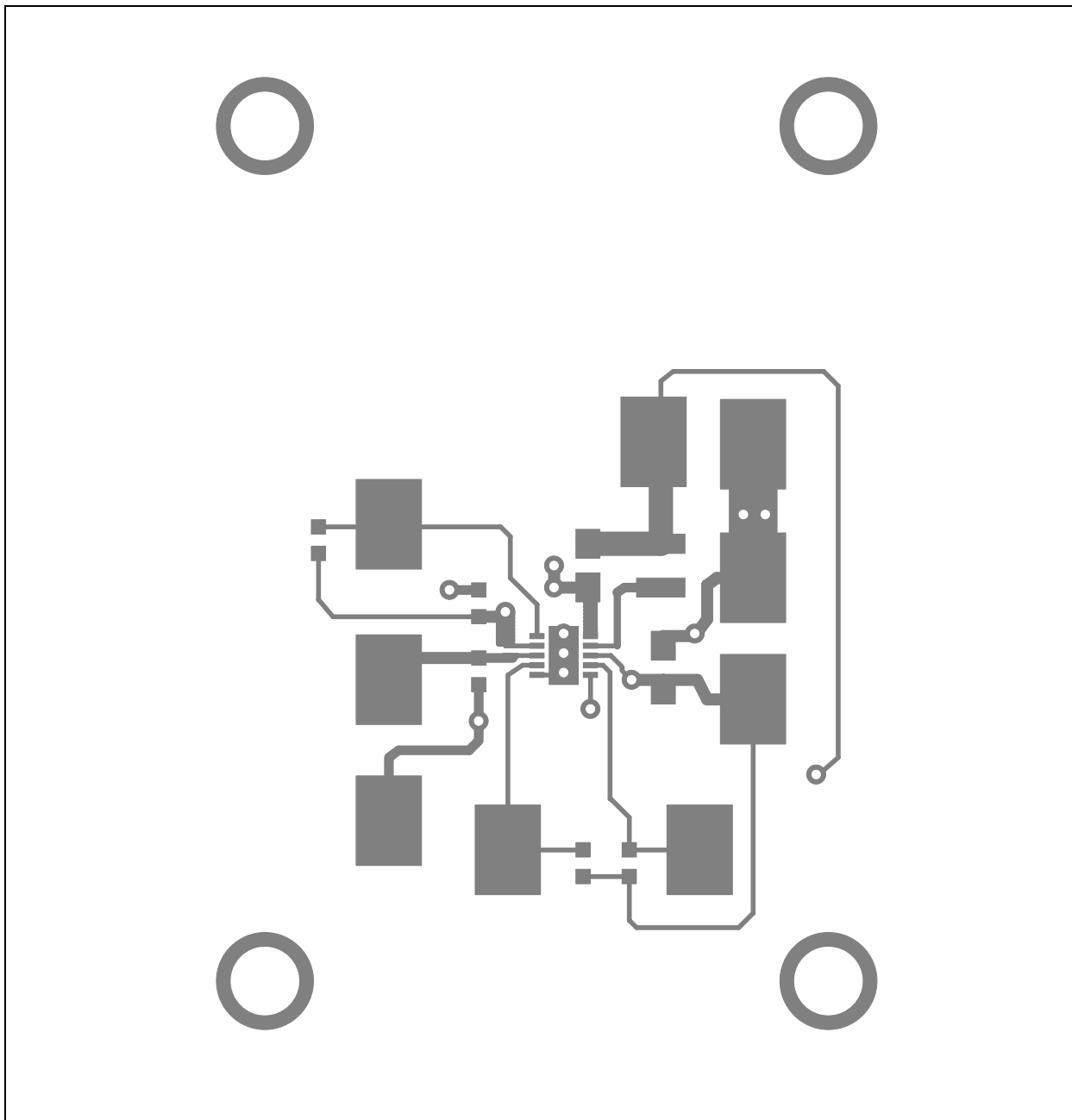
Date	Engineer	Drawn by	T. Cleveland
20MAY05			

Filename: _____ Sheet 1 of 1

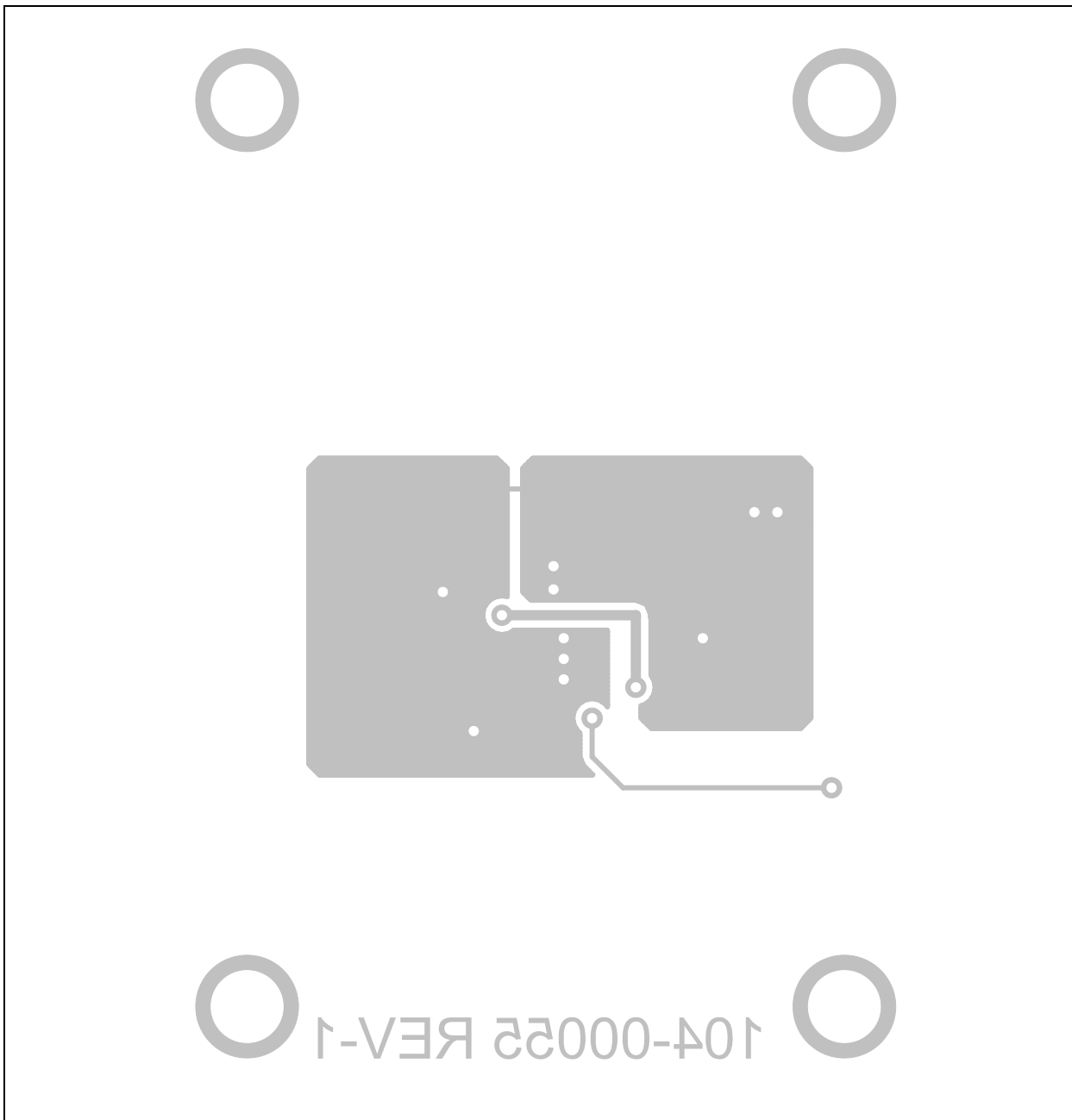
A.4 BOARD – TOP OVERLAY



A.5 BOARD – TOP LAYER



A.6 BOARD – BOTTOM LAYER





TC1303B DUAL-OUTPUT REGULATOR USER'S GUIDE

Appendix B. Bill-Of-Materials (BOM)

TABLE B-1: BILL-OF-MATERIALS (BOM)

Qty.	Reference	Description	Mfgr.	Part Number
2	C1, C2	4.7 μ F, X7R Ceramic, 6.3V, 0805	Panasonic [®] -ECG	ECJ-2FB0J475M
2	C4,C6	1 μ F, X5R Ceramic, 6.3V, 0603	Panasonic-ECG	ECJ-1VB0J105K
1	L1	4.7 μ H Surface Mount Inductor	Coilcraft [®]	1008PS-472KL
1	U1	TC1303B Dual Output Regulator	Microchip Technology Inc.	TC1303B-PG0EMF
3	R2, R3, R4	1M, 1/16W, Chip Resistor, 0603	Panasonic-ECG	ERJ-3EKF1004V
9	TP2, TP3, TP4, TP5, TP7, TP8, TP9, TP10, TP11	PC TEST POINT COMPACT SMT	Keystone Electronics [®]	5016



WORLDWIDE SALES AND SERVICE

AMERICAS

Corporate Office
2355 West Chandler Blvd.
Chandler, AZ 85224-6199
Tel: 480-792-7200
Fax: 480-792-7277
Technical Support:
<http://support.microchip.com>
Web Address:
www.microchip.com

Atlanta
Alpharetta, GA
Tel: 770-640-0034
Fax: 770-640-0307

Boston
Westborough, MA
Tel: 774-760-0087
Fax: 774-760-0088

Chicago
Itasca, IL
Tel: 630-285-0071
Fax: 630-285-0075

Dallas
Addison, TX
Tel: 972-818-7423
Fax: 972-818-2924

Detroit
Farmington Hills, MI
Tel: 248-538-2250
Fax: 248-538-2260

Kokomo
Kokomo, IN
Tel: 765-864-8360
Fax: 765-864-8387

Los Angeles
Mission Viejo, CA
Tel: 949-462-9523
Fax: 949-462-9608

San Jose
Mountain View, CA
Tel: 650-215-1444
Fax: 650-961-0286

Toronto
Mississauga, Ontario,
Canada
Tel: 905-673-0699
Fax: 905-673-6509

ASIA/PACIFIC

Australia - Sydney
Tel: 61-2-9868-6733
Fax: 61-2-9868-6755

China - Beijing
Tel: 86-10-8528-2100
Fax: 86-10-8528-2104

China - Chengdu
Tel: 86-28-8676-6200
Fax: 86-28-8676-6599

China - Fuzhou
Tel: 86-591-8750-3506
Fax: 86-591-8750-3521

China - Hong Kong SAR
Tel: 852-2401-1200
Fax: 852-2401-3431

China - Shanghai
Tel: 86-21-5407-5533
Fax: 86-21-5407-5066

China - Shenyang
Tel: 86-24-2334-2829
Fax: 86-24-2334-2393

China - Shenzhen
Tel: 86-755-8203-2660
Fax: 86-755-8203-1760

China - Shunde
Tel: 86-757-2839-5507
Fax: 86-757-2839-5571

China - Qingdao
Tel: 86-532-502-7355
Fax: 86-532-502-7205

ASIA/PACIFIC

India - Bangalore
Tel: 91-80-2229-0061
Fax: 91-80-2229-0062

India - New Delhi
Tel: 91-11-5160-8631
Fax: 91-11-5160-8632

Japan - Kanagawa
Tel: 81-45-471- 6166
Fax: 81-45-471-6122

Korea - Seoul
Tel: 82-2-554-7200
Fax: 82-2-558-5932 or
82-2-558-5934

Malaysia - Penang
Tel: 011-604-646-8870
Fax: 011-604-646-5086

Philippines - Manila
Tel: 011-632-634-9065
Fax: 011-632-634-9069

Singapore
Tel: 65-6334-8870
Fax: 65-6334-8850

Taiwan - Kaohsiung
Tel: 886-7-536-4818
Fax: 886-7-536-4803

Taiwan - Taipei
Tel: 886-2-2500-6610
Fax: 886-2-2508-0102

Taiwan - Hsinchu
Tel: 886-3-572-9526
Fax: 886-3-572-6459

EUROPE

Austria - Weis
Tel: 43-7242-2244-399
Fax: 43-7242-2244-393

Denmark - Ballerup
Tel: 45-4450-2828
Fax: 45-4485-2829

France - Massy
Tel: 33-1-69-53-63-20
Fax: 33-1-69-30-90-79

Germany - Ismaning
Tel: 49-89-627-144-0
Fax: 49-89-627-144-44

Italy - Milan
Tel: 39-0331-742611
Fax: 39-0331-466781

Netherlands - Drunen
Tel: 31-416-690399
Fax: 31-416-690340

England - Berkshire
Tel: 44-118-921-5869
Fax: 44-118-921-5820